

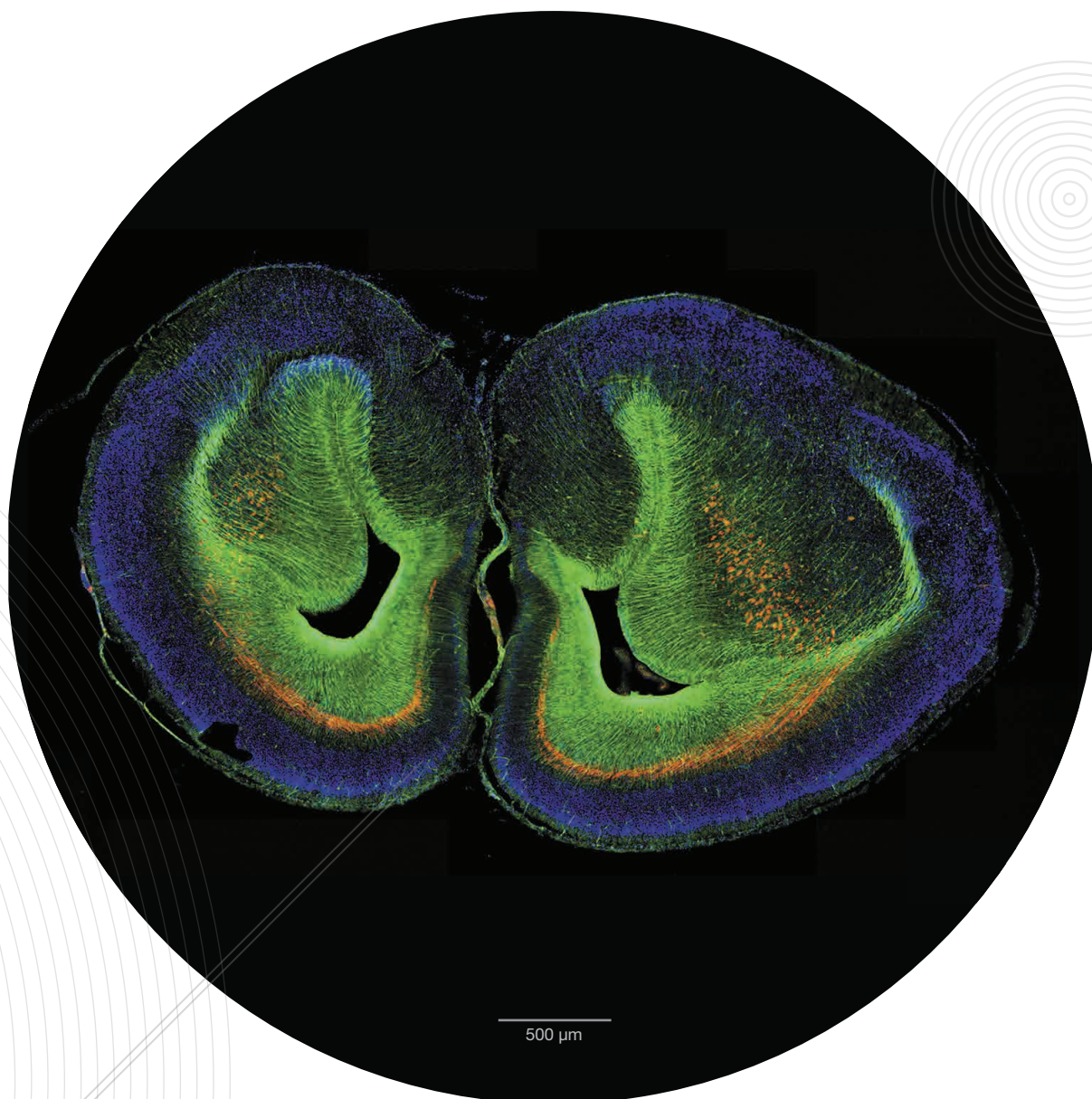
OLYMPUS[®]

Your Vision, Our Future

Inverted Research Microscope

Pro

IXplore



AUTOMATED IMAGING

for accurate and efficient experiments

Designed for automated multi-dimensional observation and easy experiment set-up, the IXplore Pro microscope system enables effortless data collection and seamless acquisition of panoramic, multi-channel images.

www.olympus-lifescience.com/ixplore-pro



IXplore Pro

Microscope System
Automated imaging
for accurate and
efficient experiments

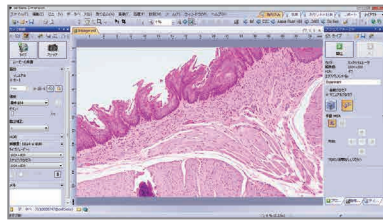
EASE OF USE

Use the Graphical Experiment Manager (GEM) interface to effortlessly set up automated, multi-dimensional imaging experiments (X,Y,Z,T, λ).

IX3-SSU ultrasonic stage.



Fly-eye illuminator.

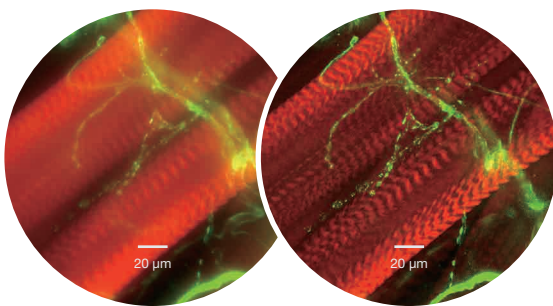
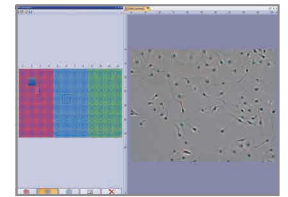
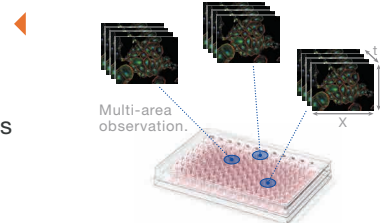


ACCURATE TILING

Combine the Olympus cellSens focus map and focus compensation function with the IX3-SSU ultrasonic stage and fly-eye optics to generate precisely-stitched and evenly-illuminated, panoramic images.

WELL PLATES MADE SIMPLE

The well plate navigator in cellSens and its database function enable users to easily track, recall and navigate to various well plate positions.

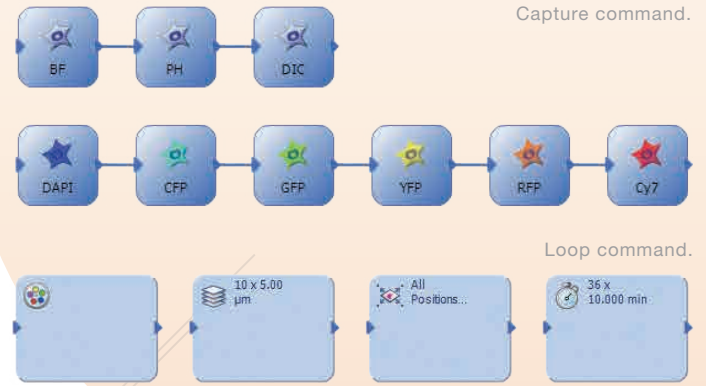


Normal

Deconvolution Applied

RAPID DECONVOLUTION

Quickly enhance imaging quality through the optional Olympus cellSens deconvolution module.



Your Science Matters™

www.olympus-lifescience.com/ixplore-pro

- OLYMPUS CORPORATION is ISO14001 certified.
- OLYMPUS CORPORATION is ISO9001 certified.
- Illumination devices for microscope have suggested lifetimes. Periodic inspections are required. Please visit our website for details.

- All company and product names are registered trademarks and/or trademarks of their respective owners.
- Images on the PC monitors are simulated.
- Specifications and appearances are subject to change without any notice or obligation on the part of the manufacturer.